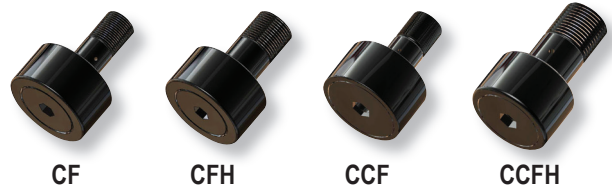




Load Runners®



CF

CFH

CCF

CCFH

Interchange Guide NEEDLE ROLLERS

CF concentric, stud type

Osborn	Smith	McGill	RBC	Torrington
CF 1/2 N-SB	CR - 1/2-AXB	CF - 1/2-N-SB	-	CRS - 8 B
CF 1/2 S	CR - 1/2-X	CF - 1/2-S	S - 16-S	CRS - 8-1
CF 1/2 SB	CR - 1/2-XB	CF - 1/2-SB	S - 16-LW	BCRS - 8-1
CF 5/8 NS	-	CF - 5/8-N-S	-	CRS-10
CF 5/8 N-SB	-	CF - 5/8-N-SB	-	BCRS-10
CF 5/8 S	CR - 5/8-X	CF - 5/8-S	S - 20-S	CRS - 10-1
CF 5/8 SB	CR - 5/8-XB	CF - 5/8-SB	-	CRSB - 10-1
CF 11/16 S	CR - 11/16-X	CF - 11/16-S	S - 22-S	-
CF 3/4	CR - 3/4	CF - 3/4	S - 24	CR - 12
CF 3/4 S	CR - 3/4-X	CF - 3/4-S	S - 24-S	CRS - 12
CF 3/4 SB	CR - 3/4-XB	CF - 3/4-SB	-	CRSB - 12
CF 7/8	CR - 7/8	CF - 7/8	S - 28	CR - 14
CF 7/8 S	CR - 7/8-X	CF - 7/8-S	S - 28-S	CRS - 14
CF 7/8 SB	CR - 1-XB	CF - 1-SB	S - 32-SW	CRS - 16 B
CF 1	CR - 1	CF - 1	S - 32	CR - 16
CF 1 S	CR - 1-X	CF - 1-S	-	-
CF 1 SB	CR - 1-XB	CF - 1-SB	-	CRSB - 16
CF 1-1/8 S	CR - 1 1/8-X	CF - 1-1/8-S	S - 36-S	CRS - 18
CF 1-1/8 SB	CR - 1 1/8-XB	CF - 1-1/8-SB	S - 36-SW	CRS - 18B
CF 1-1/4	CR - 1 1/4	CF - 1 1/4	S - 40	CR - 20
CF 1-1/4 B	CR - 1 1/4-B	CF - 1 1/4 B	S - 40 W	CR - 20B
CF 1-1/4 S	CR - 1 1/4-X	CF - 1 1/4-S	S - 40-S	CRS - 20
CF 1-1/4 SB	CR - 1 1/4-XB	CF - 1 1/4-SB	S - 40-SW	CRS - 20B
CF 1-3/8	CR - 1 3/8	CF - 1 3/8	S - 44	CR - 22
CF 1-3/8 S	CR - 1 3/8-X	CF - 1 3/8-S	S - 44-S	CRS - 22
CF 1-3/8 SB	CR - 1 3/8-XB	CF - 1 3/8-SB	S - 44-SW	CRS - 22B
CF 1-1/2 S	CR - 1 1/2-X	CF - 1 1/2-S	S - 48-S	CRS - 24
CF 1-1/2 SB	CR - 1 1/2-XB	CF - 1 1/2-SB	S - 48-SW	CRS - 24B
CF 1-5/8 S	CR - 1 5/8-X	CF - 1 5/8-S	S - 52-S	CRS - 26
CF 1-5/8 SB	CR - 1 5/8-XB	CF - 1 5/8-SB	S - 52-SW	CRS - 26B
CF 1-3/4 S	CR - 1 3/4-X	CF - 1 3/4-S	S - 56-S	CRS - 28
CF 1-3/4 SB	CR - 1 3/4-XB	CF - 1 3/4-SB	S - 56-SW	CRS - 28B
CF 1-7/8	CR - 1 7/8	CF - 1 7/8	S - 60	CR - 30
CF 1-7/8 S	CR - 1 7/8-X	CF - 1 7/8-S	S - 60-S	CRS - 30
CF 1-7/8 SB	CR - 1 7/8-XB	CF - 1 7/8-SB	S - 60-SW	CRS - 30B
CF 2	CR - 2	CF - 2	S - 64	CR - 32
CF 2 S	CR - 2-X	CF - 2-S	S - 64-S	CRS - 32
CF 2 SB	CR - 2-XB	CF - 2-SB	S - 64-SW	CRS - 32B
CF 2-1/4 SB	CR - 2 1/4-XB	CF - 2 1/4-SB	S - 72-SW	CRS - 36B
CF 2-1/2	CR - 2 1/2	CF - 2 1/2	S - 80	CR - 40
CF 2-1/2 SB	CR - 2 1/2-XB	CF - 2 1/2-SB	S - 80-SW	CRS - 40B
CF 2-3/4 SB	CR - 2 3/4-XB	CF - 2 3/4-SB	S - 88-SW	CRS - 44B
CF 3 SB	CR - 3-XB	CF - 3-SB	S - 96-SW	CRS - 48B
CF 3-1/2 SB	CR - 3 1/2-XB	CF - 3 1/2-SB	S - 112-SW	CRS - 56B
CF 4 SB	CR - 4-XB	CF - 4-SB	S - 128-SW	CRS - 64B

CCF concentric, stud type, crowned

Osborn	Smith	McGill	RBC	Torrington
CCF 1/2 NSB	-	-	-	-
CCF 1/2 SB	CR - 1/2-XBC	CCF 1/2 SB	CS16LW	CRSBC-8-1
CCF 5/8 SB	CR - 5/8-XBC	CCF 5/8 SB	CS20LW	CRSBC-10-1
CCF 3/4 S	CR - 3/4-XC	CCF 3/4 S	CS24L	-
CCF 3/4 SB	CR - 3/4-XBC	CCF 3/4 SB	CS24LW	CRSBC-12
CCF 7/8 SB	CR - 7/8-XBC	CCF 7/8 SB	CS28LW	CRSBC-14
CCF 1 SB	CR - 1-XBC	CCF 1 SB	CS32LW	CRSBC-16
CCF 1-1/8 SB	CR - 1-1/8-XBC	CCF 1-1/8 SB	CS36LW	CRSBC-18
CCF 1-1/4 S	CR - 1-1/4-XC	CCF 1-1/4 S	CS40L	-
CCF 1-1/4 SB	CR - 1-1/4-XBC	CCF 1-1/4 SB	CS40LW	CRSBC-20
CCF 1-3/8 SB	CR - 1-3/8-XBC	CCF 1-3/8 SB	CS44LW	CRSBC-22
CCF 1-1/2 S	CR - 1-1/2-XC	CCF 1-1/2 S	CS48L	-
CCF 1-1/2 SB	CR - 1-1/2-XBC	CCF 1-1/2 SB	CS48LW	CRSBC-24
CCF 1-5/8 SB	CR - 1-5/8-XBC	CCF 1-5/8 SB	CS52LW	CRSBC-26
CCF 1-3/4 SB	CR - 1-3/4-XBC	CCF 1-3/4 SB	CS56LW	CRSBC-28
CCF 1-7/8 SB	CR - 1-7/8-XBC	CCF 1-7/8 SB	CS60LW	CRSBC-30
CCF 2 SB	CR - 2-XBC	CCF 2 SB	CS64LW	CRSBC-32
CCF 2-1/2 SB	CR - 2-1/2-XBC	CCF 2-1/2 SB	CS80LW	CRSBC-40
CCF 2-3/4 SB	CR - 2-3/4-XBC	CCF 2-3/4 SB	CS88LW	CRSBC-44
CCF 3 SB	CR - 3-XBC	CCF 3 SB	CS96LW	CRSBC-48
CCF 3-1/4 S	CR - 3-1/4-XC	CCF 3-1/4 S	CS104L	-
CCF 3-1/4 SB	CR - 3-1/4-XBC	CCF 3-1/4 SB	CS104LW	CRSBC-52
CCF 3-1/2 SB	CR - 3-1/2-XBC	CCF 3-1/2 SB	CS112LW	CRSBC-56
CCF 4 SB	CR - 4-XBC	CCF 4 SB	CS128LW	CRSBC-64

CFH concentric, stud type, heavy duty

Osborn	Smith	McGill	RBC
CFH 1/2	HR - 1/2	CFH 1/2	H - 16
CFH 1/2 B	HR - 1/2-B	CFH 1/2 B	H - 16-W
CFH 1/2 SB	HR - 1/2-XB	CFH 1/2 SB	H - 16-SW
CFH 9/16 SB	-	CFH 9/16 SB	H - 18-LW
CFH 5/8 S	HR - 5/8-X	CFH 5/8 S	H - 20-S
CFH 5/8 SB	HR - 5/8-XB	CFH 5/8 SB	H - 20-SW
CFH 11/16 SB	-	CFH 11/16 SB	-
CFH 3/4	HR - 3/4	CFH 3/4	H - 24
CFH 3/4 S	HR - 3/4-X	CFH 3/4 S	H - 24-S
CFH 3/4 SB	HR - 3/4-XB	CFH 3/4 SB	H - 24-SW
CFH 7/8 S	HR - 7/8-X	CFH 7/8 S	H - 28-S
CFH 7/8 SB	HR - 7/8-XB	CFH 7/8 SB	H - 28-SW
CFH 1	HR - 1	CFH 1	H - 32
CFH 1 S	HR - 1-X	CFH 1 S	H - 32-S
CFH 1 SB	HR - 1-XB	CFH 1 SB	H - 32-SW
CFH 1-1/8 S	HR - 1-1/8-X	CFH 1-1/8 S	H - 36-S
CFH 1-1/8 SB	HR - 1-1/8-XB	CFH 1-1/8 SB	H - 36-SW
CFH 1-1/4	HR - 1-1/4	CFH 1-1/4	H - 40
CFH 1-1/4 S	HR - 1-1/4-X	CFH 1-1/4 S	H - 40-S
CFH 1-1/4 SB	HR - 1-1/4-XB	CFH 1-1/4 SB	H - 40-SW
CFH 1-3/8 S	HR - 1-3/8-X	CFH 1-3/8 S	H - 44-S
CFH 1-3/8 SB	HR - 1-3/8-XB	CFH 1-3/8 SB	H - 44-SW
CFH 1-1/2 B	HR - 1-1/2-B	CFH 1-1/2 B	H - 48-W
CFH 1-1/2 S	HR - 1-1/2-X	CFH 1-1/2 S	H - 48-S
CFH 1-1/2 SB	HR - 1-1/2-XB	CFH 1-1/2 SB	H - 48-SW
CFH 1-5/8 SB	HR - 1-5/8-XB	CFH 1-5/8 SB	H - 52-SW
CFH 1-3/4 S	HR - 1-3/4-X	CFH 1-3/4 S	H - 56-S
CFH 1-3/4 SB	HR - 1-3/4-XB	CFH 1-3/4 SB	H - 56-SW
CFH 1-7/8 SB	HR - 1-7/8-XB	CFH 1-7/8 SB	H - 60-SW
CFH 2 S	HR - 2-X	CFH 2 S	H - 64-S
CFH 2 SB	HR - 2-XB	CFH 2 SB	H - 64-SW
CFH 2-1/4 SB	HR - 2-1/4-XB	CFH 2-1/4 SB	H - 72-SW
CFH 2-1/2 B	HR - 2-1/2-B	CFH 2-1/2 B	H - 80-W
CFH 2-1/2 S	HR - 2-1/2-X	CFH 2-1/2 S	H - 80-S
CFH 2-1/2 SB	HR - 2-1/2-XB	CFH 2-1/2 SB	H - 80-SW
CFH 2-3/4 SB	HR - 2-3/4-XB	CFH 2-3/4 SB	H - 88-SW
CFH 3 S	HR - 3-X	CFH 3 S	H - 96-S
CFH 3 SB	HR - 3-XB	CFH 3 SB	H - 96-SW
CFH 3-1/4 S	HR - 3-1/4-X	CFH 3-1/4 S	H - 104-S
CFH 3-1/4 SB	HR - 3-1/4-XB	CFH 3-1/4 SB	H - 104-SW
CFH 3-1/2 SB	HR - 3-1/2-XB	CFH 3-1/2 SB	H - 112-SW
CFH 4 S	HR - 4-X	CFH 4 S	H - 128-S
CFH 4 SB	HR - 4-XB	CFH 4 SB	H - 128-SW
CFH 5 S	-	-	-

CCFH concentric, stud type, crowned, heavy duty

Osborn	Smith	McGill	RBC
CCFH 1/2 SB	HR - 1/2-XBC	CCFH 1/2 SB	CH16LW
CCFH 9/16 SB	-	CCFH 9/16 SB	CH18LW
CCFH 5/8 S	HR - 5/8-XC	CCFH 5/8 S	CH20LW
CCFH 5/8 SB	HR - 5/8-XBC	CCFH 5/8 SB	CH20LW
CCFH 3/4 S	HR - 3/4-XC	CCFH 3/4 S	CH24L
CCFH 3/4 SB	HR - 3/4-XBC	CCFH 3/4 SB	CH24LW
CCFH 7/8 SB	HR - 7/8-XBC	CCFH 7/8 SB	CH28LW
CCFH 1 SB	HR - 1-XBC	CCFH 1 SB	CH32LW
CCFH 1-1/4 SB	HR - 1-1/4-XBC	CCFH 1-1/4 SB	CH40LW
CCFH 1-1/2 SB	HR - 1-1/2-XBC	CCFH 1-1/2 SB	CH48LW
CCFH 1-3/4 SB	HR - 1-3/4-XBC	CCFH 1-3/4 SB	CH56LW
CCFH 2 S	HR - 2-XC	CCFH 2 S	CH64L
CCFH 2 SB	HR - 2-XBC	CCFH 2 SB	CH64LW
CCFH 2-1/2 SB	HR - 2-1/2-XBC	CCFH 2-1/2 SB	CH80LW
CCFH 3 SB	HR - 3-XBC	CCFH 3 SB	CH96LW
CCFH 4 SB	HR - 4-XBC	CCFH 4 SB	CH128LW



Load Runners®



CFE

CCFE

CYR

CCYR

CFD

Interchange Guide NEEDLE ROLLERS

CFE eccentric, stud type

Osborn	Smith	McGill	RBC
CFE 1 S	-	CFE 1 S	-
CFE 1/2 SB	CR - 1/2-XBE	CFE 1/2 SB	S16LWX
CFE 3/4 SB	CR - 3/4-XBE	CFE 3/4 SB	S24LWX
CFE 1 SB	CR - 1-XBE	CFE 1 SB	S32LWX
CFE 1-1/4 SB	CR - 1-1/4-XBE	CFE 1-1/4 SB	S40LWX
CFE 1-1/2 SB	CR - 1-1/2-XBE	CFE 1-1/2 SB	S48LWX
CFE 2-3/4 SB	CR - 2-3/4-XBE	CFE 2-3/4 SB	S88LWX
CFE 3 SB	-	CFE 3 SB	S96LWX

CCFE eccentric, stud type, crowned

Osborn	Smith	McGill	RBC
CCFE 1-1/2 SB	CR - 1-1/2-XBEC	CCFE 1-1/2 SB	CS48LWX
CCFE 5/8 SB	CR - 5/8-XBEC	CCFE 5/8 SB	CS20LWX
CCFE 3/4 SB	CR - 3/4-XBEC	CCFE 3/4 SB	CS24LWX
CCFE 1-1/4 SB	CR - 1-1/4-XBEC	CCFE 1-1/4 SB	CS40LWX
CCFE 1-3/8 SB	CR - 1-3/8-XBEC	CCFE 1-3/8 SB	CS44LWX
CCFE 2 SB	CR - 2-XBEC	CCFE 2 SB	CS64LWX
CCFE 2-1/2 SB	CR - 2-1/2-XBEC	CCFE 2-1/2 SB	CS80LWX
CCFE 3 SB	-	CCFE 3 SB	CS96LWX

CYR yoke

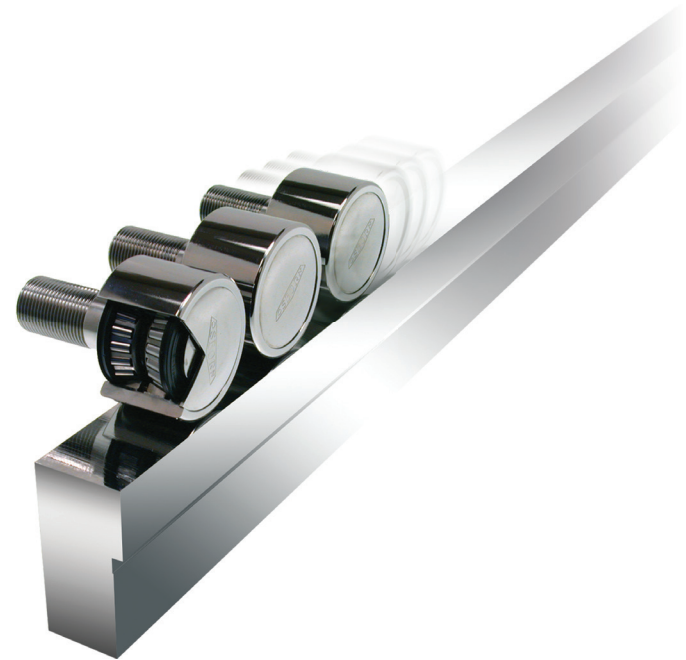
Osborn	Smith	McGill	RBC	Torrington
CYR 3/4	YR - 3/4	CYR 3/4	Y - 24	YCR - 12
CYR 3/4 S	YR - 3/4-X	CYR 3/4 S	Y - 24-S	YCRS - 12
CYR 7/8 S	YR - 7/8-X	CYR 7/8 S	Y - 28-S	YCRS - 14
CYR 1	YR - 1	CYR 1	Y - 32	YCR - 16
CYR 1 S	YR - 1-X	CYR 1 S	Y - 32-S	YCRS - 16
CYR 1 S-CR	YR - 1-X-SS	CYR 1 S-CR	-	-
CYR 1-1/8	YR - 1-1/8	CYR 1-1/8	Y - 36	YCR - 18
CYR 1-1/8 S	YR - 1-1/8-X	CYR 1-1/8 S	Y - 36-S	YCRS - 18
CYR 1-1/4	YR - 1-1/4	CYR 1-1/4	Y - 40	YCR - 20
CYR 1-1/4 S	YR - 1-1/4-X	CYR 1-1/4 S	Y - 40-S	YCRS - 20
CYR 1-3/8	YR - 1-3/8	CYR 1-3/8	Y - 44	YCR - 22
CYR 1-3/8 S	YR - 1-3/8-X	CYR 1-3/8 S	Y - 44-S	YCRS - 22
CYR 1-1/2	YR - 1-1/2	CYR 1-1/2	Y - 48	YCR - 24
CYR 1-1/2 S	YR - 1-1/2-X	CYR 1-1/2 S	Y - 48-S	YCRS - 24
CYR 1-5/8 S	YR - 1-5/8-X	CYR 1-5/8 S	Y - 52-S	YCRS - 26
CYR 1-3/4 S	YR - 1-3/4-X	CYR 1-3/4 S	Y - 56-S	YCRS - 28
CYR 1-7/8 S	YR - 1-7/8-X	CYR 1-7/8 S	Y - 60-S	YCRS - 30
CYR 2 S	YR - 2-X	CYR 2 S	Y - 64-S	YCRS - 32
CYR 2 1/4	YR - 2-1/4	CYR 2 1/4	Y - 72	YCR - 36
CYR 2-1/4 S	YR - 2-1/4-X	CYR 2-1/4 S	Y - 72-S	YCRS - 36
CYR 2-1/2	YR - 2-1/2	CYR 2-1/2	Y - 80	YCR - 40
CYR 2-1/2 S	YR - 2-1/2-X	CYR 2-1/2 S	Y - 80-S	YCRS - 40
CYR 2-3/4 S	YR - 2-3/4-X	CYR 2-3/4 S	Y - 88-S	YCRS - 44
CYR 3 S	YR - 3-X	CYR 3 S	Y - 96-S	YCRS - 48
CYR 3	YR - 3	CYR 3	Y - 96	YCR - 48
CYR 3-1/4 S	YR - 3-1/4-X	CYR 3-1/4 S	Y - 104-S	YCRS - 52
CYR 3-1/2 S	YR - 3-1/2-X	CYR 3-1/2 S	Y - 112-S	YCRS - 56
CYR 4	YR - 4	CYR 4	Y - 128	YCR - 64
CYR 4 S	YR - 4-X	CYR 4 S	Y - 128-S	YCRS - 64
CYR 5 S	YR - 5-X	CYR 5 S	Y - 160-S	YCRS - 80
CYR 6 S	YR - 6-X	CYR 6 S	Y - 192-S	YCRS - 96

CCYR yoke, crowned

Osborn	Smith	McGill	RBC	RBC Roller
CCYR 3/4 S	YR - 3/4-XC	CCYR 3/4 S	CY24L	-
CCYR 7/8 S	YR - 7/8-XC	CCYR 7/8 S	CY28L	-
CCYR 1 S	YR - 1-XC	CCYR 1 S	CY32L	CBRY1
CCYR 1-1/4 S	YR - 1-1/4-XC	CCYR 1-1/4 S	CY40L	CBRY1-1/4
CCYR 1-3/8 S	YR - 1-3/8-XC	CCYR 1-3/8 S	CY44L	CBRY1-3/8
CCYR 1-1/2 S	YR - 1-1/2-XC	CCYR 1-1/2 S	CY48L	CBRY1-1/2
CCYR 1-3/4 S	YR - 1-3/4-XC	CCYR 1-3/4 S	CY56L	CBRY1-3/4
CCYR 1-7/8 S	YR - 1-7/8-XC	CCYR 1-7/8 S	CY60L	CBRY1-7/8
CCYR 2 S	YR - 2-XC	CCYR 2 S	CY64L	CBRY2
CCYR 2-1/2 S	YR - 2-1/2-XC	CCYR 2-1/2 S	CY80L	CBRY2-1/2
CCYR 2-3/4 S	YR - 2-3/4-XC	CCYR 2-3/4 S	CY88L	CBRY2-3/4
CCYR 4	YR - 4-C	CCYR 4	CY128L	CBRY4

CFD double row, cylindrical

Osborn	Smith	McGill	RBC
CFD 1-1/2	DCR - 1-1/2	CFD 1-1/2	RBC 1-1/2
CFD 1-3/4	DCR - 1-3/4	CFD 1-3/4	RBC 1-3/4
CFD 2	DCR - 2	CFD 2	RBC 2
CFD 3	DCR - 3	CFD 3	RBC 3



Load Runners®

Osborn

Tel: 800-720-3358 • 765-965-5333

Web: osborn.com | osbornloadrunners.com

Email: info@osborn.com



**Thank you! For viewing product information on the T.E.A.
range of engineering components.**

T.E.A. Transmissions Pty Ltd

349 Tahiti Rd, Tiaro

Qld 4650 AUSTRALIA

Ph: 61-(0)7 4129 2533

Fax: 61-(0)7 4129 2437

sales@tea.net.au

www.tea.net.au



Your partner in quality engineering components since 1986